

MVSD Work Study Session Capital Projects Update

August 4, 2021

La Venture Middle School

MVHS Old Main

Complete or Work in Progress:

- Tying rebar for shotcrete walls
- Preparation work for stair towers 12 & 13 erection
- Utility work
- Undermining for footing sequence continues for the east side
- MEP podium work to start
- Two portables to be demolished with fire lane install
- Miscellaneous Site Improvements

Upcoming Milestones:

- Roof dry-in Oct. 1
- Aiming for shotcrete completion by end of August
- Steel Erection at New Towers Oct 1st

MVSD Board Work Study Session – Aug 4, 2021



MVHS Old Main



<http://mvhsoldmain.lydig.com/>

MVSD Board Work Study Session – Aug 4, 2021



MVHS Old Main



<http://mvhsoldmain.lydig.com/>

MVSD Board Work Study Session – Aug 4, 2021



MVHS Old Main

<http://mvhsoldmain.lydig.com/>

MVSD Board Work Study Session – Aug 4, 2021



MVHS Old Main



<http://mvhsoldmain.lydig.com/>

MVSD Board Work Study Session – Aug 4, 2021



MVHS Old Main



<http://mvhsoldmain.lydig.com/>

MVSD Board Work Study Session – Aug 4, 2021



MVHS Old Main

<http://mvhsoldmain.lydig.com/>

MVSD Board Work Study Session – Aug 4, 2021



MVHS Old Main



<http://mvhsoldmain.lydig.com/>

Culture of Care Week

- As part of this initiative, we talked about how when we create a better jobsite, we can also better the community, which is why we wanted to raise money for the Skagit Valley Neighbors in Need.
- We are currently in the middle of our fundraising and to date we have raised \$270!



MVHS Old Main

<http://mvhsoldmain.lydig.com/>

Gate G8 (Vehicle Gate)
(PCCO-05, originally Alternate AA-9)
- Gate and adjoining fencing structure is a metal picket style.

Gate G4
- OK to Delete this auto-gate per FD and replace with a removable bollard w a Knox key access.

Gate G1
- OK to delete this auto-gate per FD.
Add posts and chain w "Knox padlock."

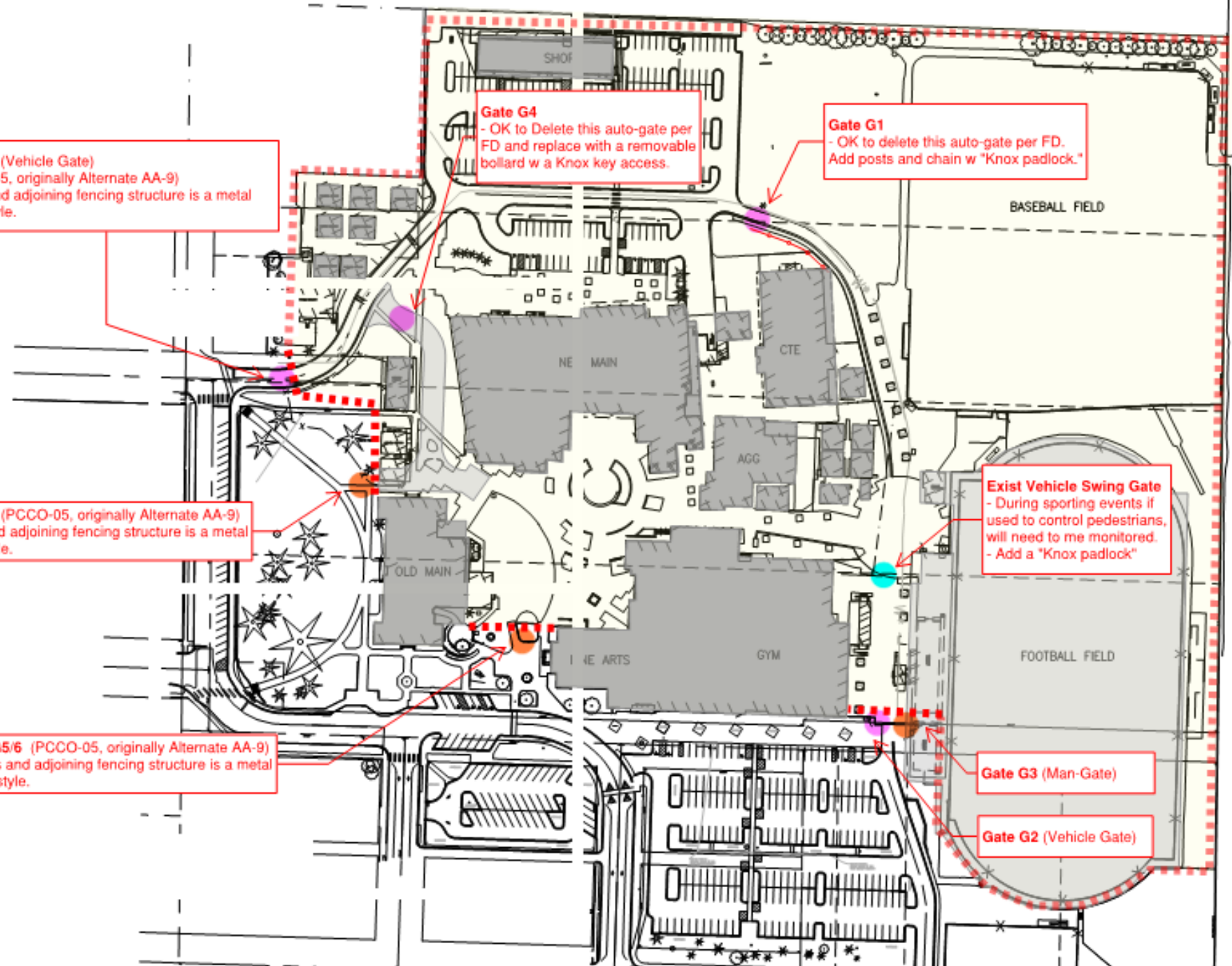
Gate G7 (PCCO-05, originally Alternate AA-9)
- Gate and adjoining fencing structure is a metal picket style.

Exist Vehicle Swing Gate
- During sporting events if used to control pedestrians, will need to be monitored.
- Add a "Knox padlock"

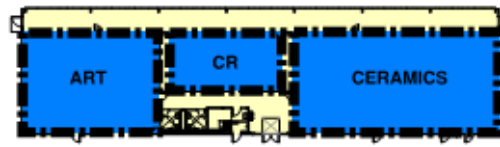
Gate G5/6 (PCCO-05, originally Alternate AA-9)
- Gates and adjoining fencing structure is a metal picket style.

Gate G3 (Man-Gate)

Gate G2 (Vehicle Gate)

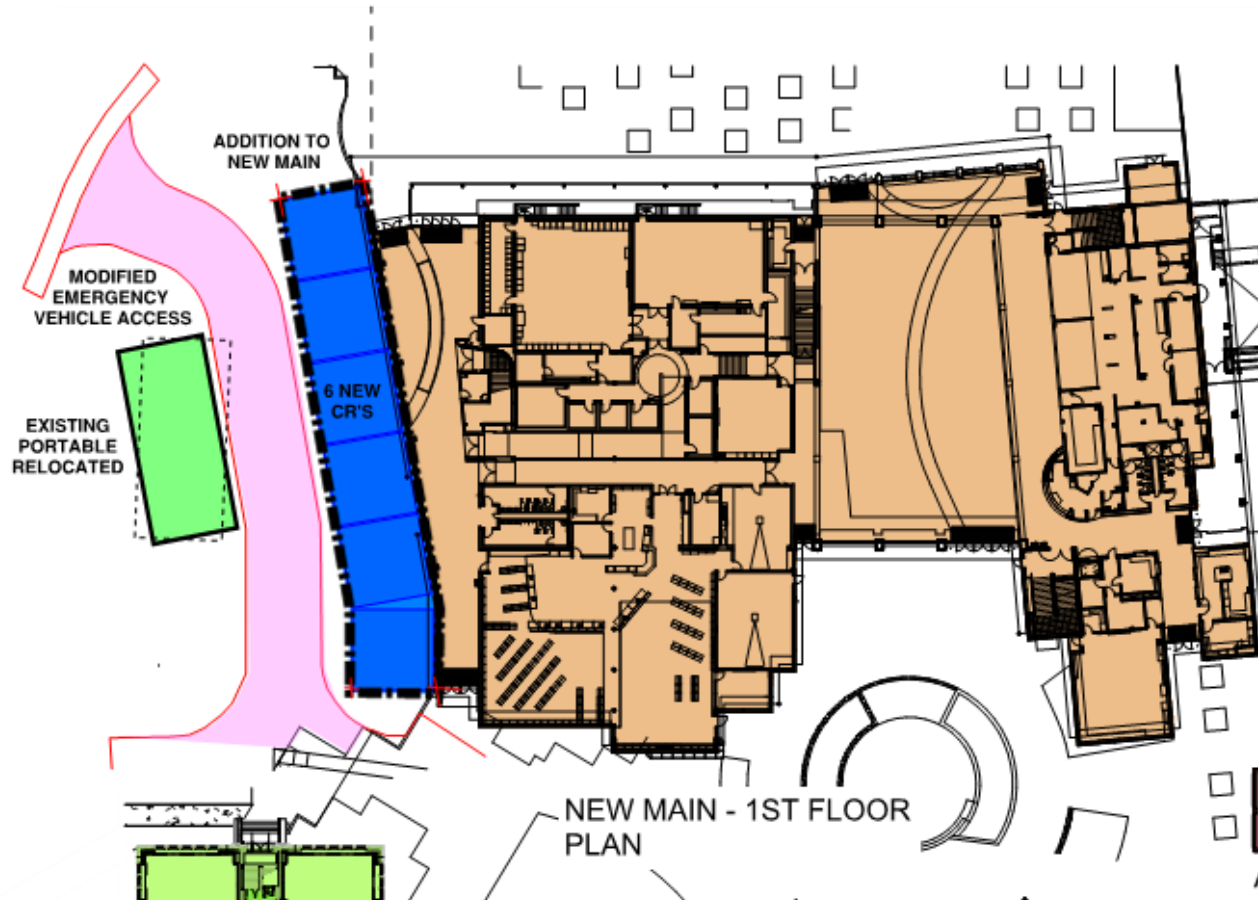


MVHS Additional Classrooms

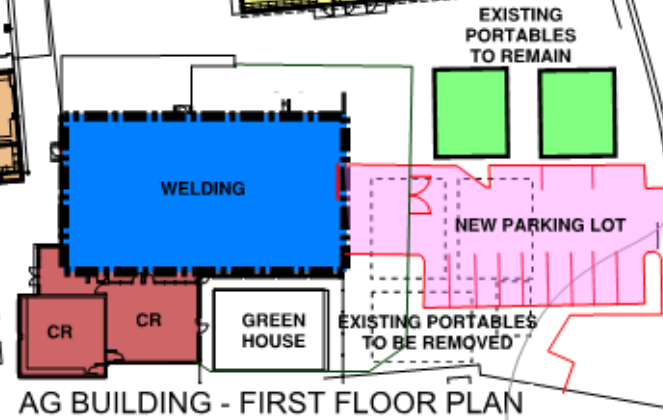


SHOP BUILDING - 1ST FLOOR
PLAN

CTE BUILDING
FLOOR PLAN



NEW MAIN - 1ST FLOOR
PLAN



AG BUILDING - FIRST FLOOR PLAN

MVHS Additional Classrooms

Questions